



Donation Offered by DriWater for California's Arbor Week 2011 Plantings!

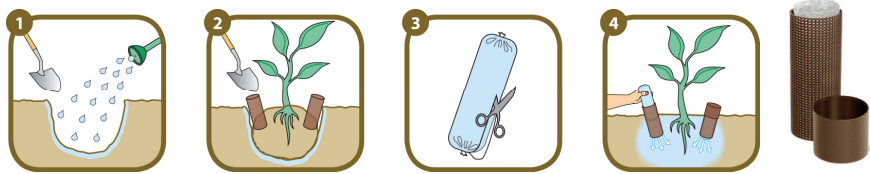
California's Arbor Week (March 7-14, 2011) is just around the corner, and to support organizations involved in tree plantings for this holiday, **DriWater, Inc., is glad to donate our time-release water products.** Since these plantings are often volunteer-based and in neighborhoods or streetscapes that may not have access to permanent irrigation; DriWater creates an effective solution for providing around the clock moisture for establishment of these saplings and small trees.

DriWater in partnership with California ReLeaf is offering your organization **one case (20 units) of Perforated Tube delivery systems**, which provides **up to 30 days of watering**, and **two cases (40 units) of replacement gel pacs for monthly reapplications** to assist in establishing these trees. You may also choose **3 cases (60 units) of DriWATER Quarts** which provides up to **90 days of continuous watering** to help establish healthy trees. Using this irrigation option reduces labor and water expense for your staff and volunteers. Please note that to successfully establish these trees, continued DriWater reapplications or scheduled watering will be necessary.

This donation can water approximately 5-20 saplings or trees for up to 90 days:

- | | |
|-------------------------|------------------------|
| (20) saplings in D-cups | (10-20) 1-gallon trees |
| (10) 5-gallon trees | (6-10) 15-gallon trees |

In turn, **DriWater would appreciate the opportunity to be recognized in public relations activities around your California Arbor Week events such as newsletters, press releases, website updates, etc.** To confirm the specifications of your planting, contact Douglas Anthony at 707-206-1437 (doug@driwater.com) in Northern California, or Lawrence O'Leary at 619-244-5221 (Lawrence@driwater.com) for Southern California.



DriWater donation order form for your California Arbor Week event (submit by 2/28/2011):

***FAX this form to us at (707) 588-1445, or E-MAIL us with the info below and we will contact you.**

Organization: _____

Contact Name: _____ Planting Date: _____

Phone number(s): _____

E-mail: _____ Website: _____

Shipping address: _____

City, State, Zip: _____