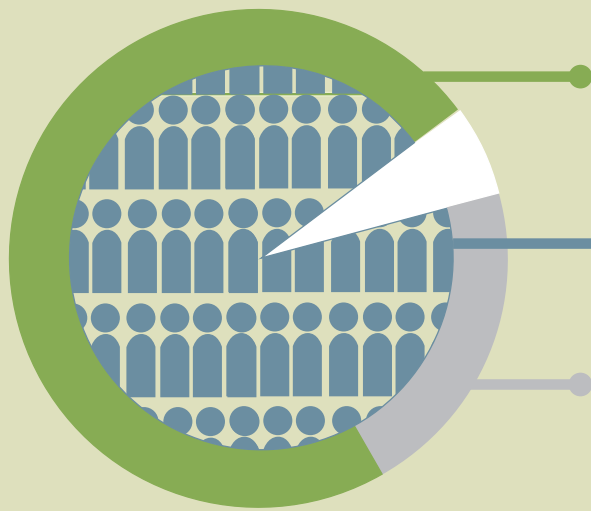


# California Needs

# Urban Forests



California's urban areas are home to approximately 200 million trees.<sup>1</sup>

Over 94% of Californians live in an urban area

There's space for 50 million more trees in California's cities and towns!

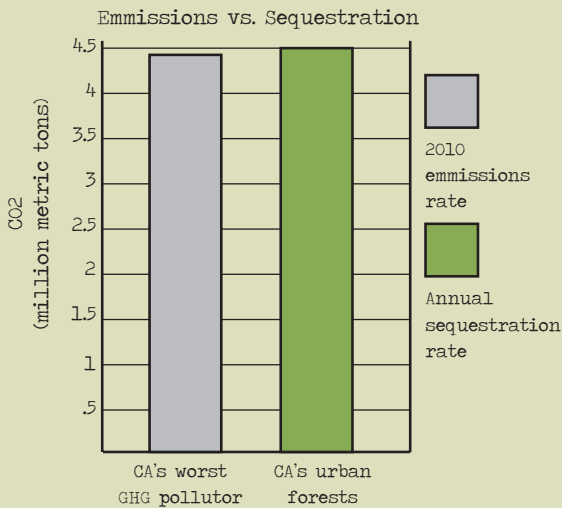
**ReLEAF** A+

urban forest  
noun: the trees, plants, and natural resources within a city or town.

Example:  
The trees, parks, trails, and green spaces in your community - even your back yard - are parts of the urban forest.

## What do urban forests do for California?

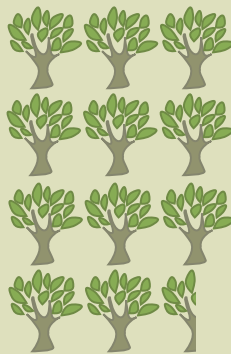
### Air<sup>2,3,4</sup>



CO2 Reduction savings per tree per year  
+  
Ozone & particulate pollution reduction per tree per year

x 200 million trees  
\$1,000,000,000

### Water<sup>5</sup>



intercept one Olympic-sized swimming pool worth of stormwater annually

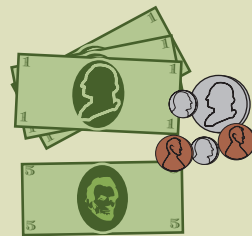
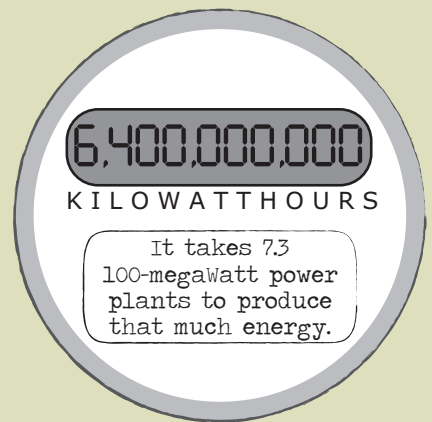


Stormwater treatment & flood control savings per tree per year

x 200 million trees  
\$720,000,000

### Energy<sup>6</sup>

177 million trees shading homes and buildings reduce air conditioning energy use by



Energy savings by utilities and customers per tree per year

x 177 million trees  
\$1,499,190,000

### Public Health<sup>7</sup>

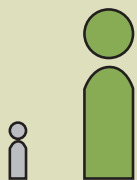


lives in least green areas



lives in most green areas

Likelihood of being physically active



3x more likely

Likelihood of being overweight or obese



40% less likely

### Jobs<sup>8</sup>



\$3.6 billion added to California's economy

### Community<sup>9</sup>



Homes, goods, and services sell for

12% more

in communities with trees than without trees



California ReLeaf's mission is to empower grassroots efforts and build strategic partnerships that preserve, protect, and enhance California's urban and community forests. We work statewide to promote alliances among community-based organizations, individuals, industry, and government agencies, encouraging each to contribute to the livability of our cities and the protection of our environment by planting and caring for trees.

To learn more about the importance of California's urban forests, visit [californiareleaf.org/whytrees](http://californiareleaf.org/whytrees).

---

## California ReLeaf

2112 Tenth Street  
Sacramento, CA 95818

Ph: 916-497-0034  
FAX: 916-497-0038

[info@californiareleaf.org](mailto:info@californiareleaf.org)  
[californiareleaf.org](http://californiareleaf.org)

